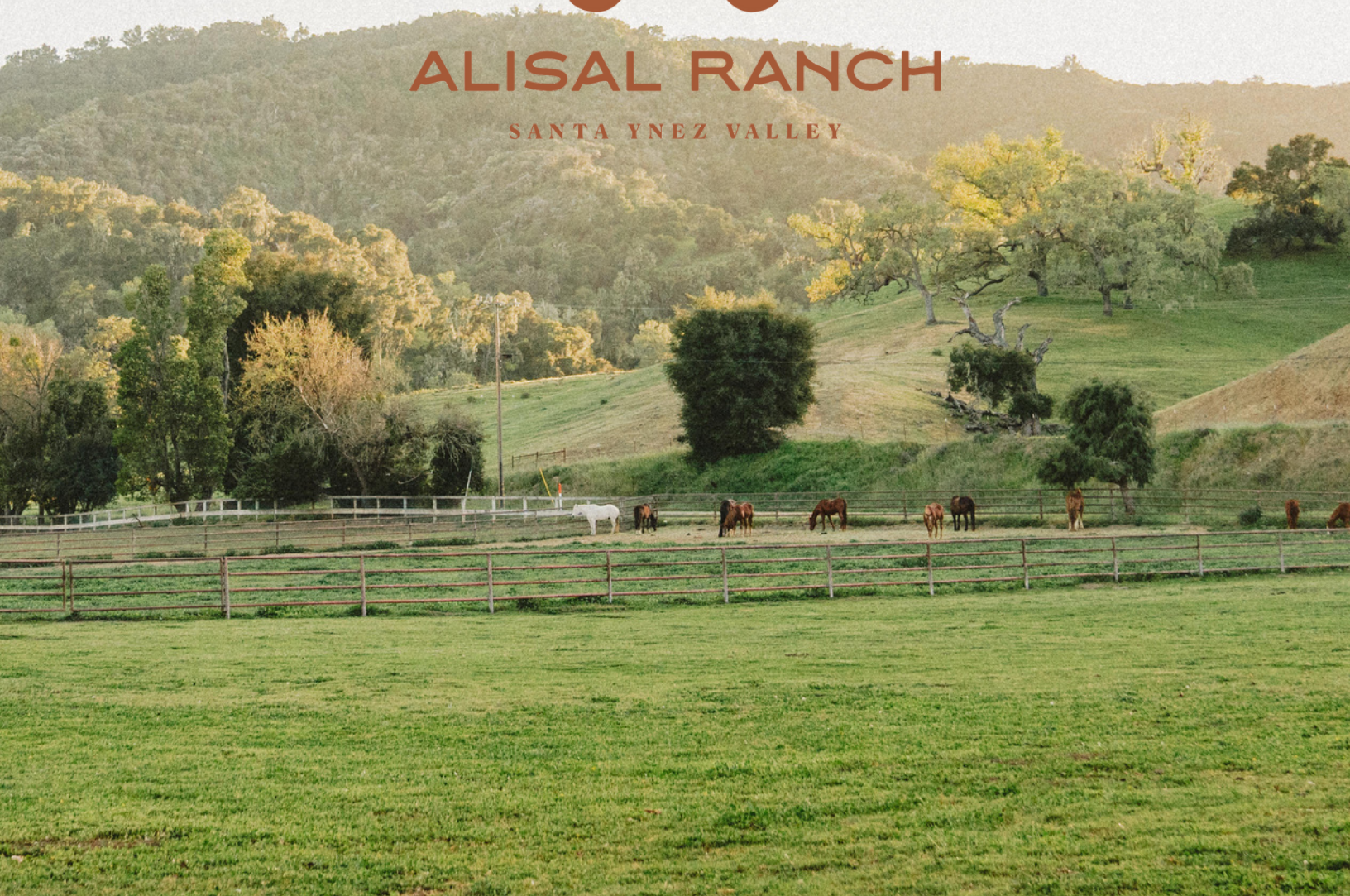


FALL & WINTER 2023
ACTIVITY GUIDE
SEPTEMBER 4, 2023 - FEBRUARY 29, 2024



ALISAL RANCH

SANTA YNEZ VALLEY



WELCOME TO ALISAL RANCH

We are excited to welcome our guests to Alisal Ranch this Fall/Winter!

To make the most of your stay, we encourage you to book activities and dining times prior to your arrival with our Ranch Concierge Team RanchConcierge@Alisal.com or (805) 693-4209.

While you are on property, our Front Desk and Ranch Concierge team are here to assist you with any questions you may have to ensure you have a memorable stay with us. For your convenience, you can now text (805) 365-1466 from your cell phone during the hours of 7am- 10pm daily.

Remember to refer to the Ranch Daily while on property for the most up-to-date schedule of activities offered at the Ranch, including shuttle times, Arts & Crafts activities, Spa/Fitness center hours and Family Fun evening activities that do not require advance sign ups.

If there is anything I can do for you personally, please always feel free to call or stop by the Front Desk.

Sincerely,

Kathleen Cochran
General Manager
(805) 686-7604

DAILY SCHEDULES

MONDAY

8:00 a.m. - 10:00 a.m.	Guided Electric Mountain Bike Ride*
8:30 a.m. - 7:00 p.m.	Arts & Crafts
8:30 a.m.	Advanced Group Trail Ride*
8:45 a.m.	Private Trail Rides*
9:00 a.m. - 10:00 a.m.	Strength/HIIT*
9:00 a.m.	Intermediate Group Trail Ride*
9:00 a.m. - 11:00 a.m.	Kid's Club*
9:00 a.m. - 11:00 a.m.	Archery & Air Rifle Combo Class*
9:30 a.m.	Novice Group Trail Ride*
10:00 a.m.	Lead Around Horseback Ride
10:00 a.m. - 11:00 a.m.	Axe Throwing*
10:30 a.m.	Scavenger Hunt
10:30 a.m.	Paint Your Lucky Horseshoe
11:45 a.m. - 12:45 p.m.	Barrel Class (Intermediate- Advanced)*
1:00 p.m. - 3:00 p.m.	Kid's Club*
1:00 p.m.	Lead Around Horseback Ride
1:00 p.m.	Novice Group Trail Ride*
1:00 p.m. - 3:00 p.m.	Archery & Air Rifle Combo Class*
1:30 p.m.	Egg Gathering
1:30 p.m.	Intermediate Group Trail Ride*
2:00 p.m.	Pens & Hens
2:00 p.m.	Advanced Group Trail Ride*
2:00 p.m. - 3:00 p.m.	Axe Throwing*
2:30 p.m.	Starter Ride*
2:30 p.m. - 3:30 p.m.	All Level Yoga*
3:00 p.m.	Adult Tennis Clinic*
3:30 p.m. - 5:00 p.m.	Kid's Club*
4:00 p.m. - 6:00 p.m.	Guided Electric Mountain Bike Ride*

TUESDAY

8:00 a.m. - 10:00 a.m.	Guided Electric Mountain Bike Ride*
8:15 a.m.	Distance Ride*
8:30 a.m.	Advanced Group Trail Ride*
8:30 a.m. - 7:00 p.m.	Arts & Crafts
8:45 a.m.	Private Trail Rides*
9:00 a.m.	Intermediate Group Trail Ride*
9:00 a.m. - 11:00 a.m.	Kid's Club*
9:00 a.m. - 11:00 a.m.	Archery & Air Rifle Combo Class*
9:30 a.m.	Novice Group Trail Ride*
10:00 a.m.	Lead Around Horseback Ride
10:00 a.m. - 11:00 a.m.	Axe Throwing*
10:30 a.m.	Scavenger Hunt
10:30 a.m.	Build a Bird Feeder
11:00 a.m. - 11:30 a.m.	Pee Wee Tennis (6-9yr) *
1:00 p.m.	Lead Around Horseback Ride
1:00 p.m.	Novice Group Trail Ride*
1:00 p.m. - 3:00 p.m.	Archery & Air Rifle Combo Class*
1:00 p.m. - 3:00 p.m.	Kid's Club*
1:30 p.m.	Intermediate Group Trail Ride*
2:00 p.m.	Fridge Farm
2:00 p.m.	Advanced Group Trail Ride*
2:00 p.m. - 2:30 p.m.	Junior Tennis (10-12 year olds) *
2:00 p.m. - 3:00 p.m.	Axe Throwing*
2:30 p.m. - 3:00 p.m.	Teen Tennis (13-17 year olds) *
2:30 p.m.	Starter Ride*
2:30 p.m. - 3:30 p.m.	Therapeutic Yoga*
3:30 p.m. - 5:00 p.m.	Kid's Club*
3:30 p.m. - 4:30 p.m.	Adult Beginner's Pickleball*
4:00 p.m. - 6:00 p.m.	Guided Electric Mountain Bike Ride*
5:30 p.m. - 8:00 p.m.	Kid's Night Out*

Note: All activities are subject to change. Please check the Ranch Daily for updates.

**indicates sign-up and or fee is required in advance. Please contact Ranch Concierge at ext.7700*

DAILY SCHEDULES

WEDNESDAY

7:15 a.m.	Novice Trail Ride to Adobe*
7:30 a.m.	Intermediate Trail Ride to Adobe*
7:45 a.m.	Advanced Trail Ride to Adobe*
8:30 a.m. - 7:00 p.m.	Arts and Crafts
8:45 a.m.	Hay Wagon Ride to Adobe*
8:45 a.m.	Private Trail Ride*
9:00 a.m. - 10:00 a.m.	Gentle Yoga*
9:00 a.m. - 11:00 a.m.	Kid's Club*
9:00 a.m. - 11:00 a.m.	Archery & Air Rifle Combo Class*
10:00 a.m.	Lead Around Horseback Ride
10:00 a.m. - 11:00 a.m.	Axe Throwing*
10:30 a.m.	Scavenger Hunt
10:30 a.m.	Paint Your Pet Rock
12:30 p.m.	Horsemanship 101*
1:00 p.m.	Novice Group Trail Ride*
1:00 p.m.	Lead Around Horseback Ride
1:00 p.m. - 3:00 p.m.	Kid's Club*
1:00 p.m. - 3:00 p.m.	Archery & Air Rifle Combo Class*
1:30 p.m.	Intermediate Group Trail Ride*
1:30 p.m.	Egg Gathering
2:00 p.m.	Advanced Group Trail Ride*
2:00 p.m.	Frame Your Farm
2:00 p.m. - 3:00 p.m.	Axe Throwing*
2:30 p.m.	Starter Ride*
3:00 p.m.	Adult Tennis Clinic*
3:30 p.m. - 4:30 p.m.	Adult Beginner's Pickleball*
3:30 p.m. - 5:00 p.m.	Kid's Club*
4:00 p.m. - 6:00 p.m.	Guided Electric Mountain Bike Ride*

THURSDAY

8:00 a.m. - 10:00 a.m.	Guided Electric Mountain Bike Ride*
8:15 a.m.	Distance Ride*
8:30 a.m.	Advanced Group Trail Ride*
8:30 a.m. - 7:00 p.m.	Arts & Crafts
8:45 a.m.	Private Trail Rides*
9:00 a.m.	Intermediate Group Trail Ride*
9:00 a.m. - 11:00 a.m.	Archery & Air Rifle Combo Class*
9:00 a.m. - 11:00 a.m.	Kid's Club*
9:30 a.m.	Novice Group Trail Ride*
10:00 a.m.	Lead Around Horseback Ride
10:00 a.m.	Picnic Ride*
10:00 a.m. - 11:00 a.m.	Axe Throwing*
10:30 a.m.	Scavenger Hunt
10:30 a.m.	Paint Your Lucky Horseshoe
11:00 a.m. - 12:00 p.m.	Pot Your Own Succulent*
1:00 p.m.	Lead Around Horseback Ride
1:00 p.m.	Novice Group Trail Ride*
1:00 p.m. - 3:00 p.m.	Archery & Air Rifle Combo Class*
1:00 p.m. - 3:00 p.m.	Kid's club*
1:30 p.m.	Intermediate Group Trail Ride*
2:00 p.m.	Advanced Group Trail Ride*
2:00 p.m. .	Fridge Farm
2:00 p.m. - 3:00p.m.	Axe Throwing*
2:30 p.m.	Starter Ride*
2:30 p.m. - 3:30 p.m.	Therapeutic Yoga*
3:30 p.m. - 5:00 p.m.	Kid's Club*
4:00 p.m. - 6:00 p.m.	Guided Electric Mountain Bike Ride*
5:30 p.m. - 8:00 p.m.	Kid's Night Out*

Note: All activities are subject to change. Please check the Ranch Daily for updates.

**indicates sign-up and or fee is required in advance. Please contact Ranch Concierge at ext.7700*

DAILY SCHEDULES

FRIDAY

8:30 a.m. - 700 p.m.	Arts & Crafts
8:30 a.m.	Advanced Group Trail Ride*
8:45 a.m.	Private Trail Rides*
9:00 a.m.	Intermediate Group Trail Ride*
9:00 a.m. - 10:00 a.m.	Gentle Yoga*
9:00 a.m.-11:00 a.m.	Archery & Air Rifle Combo Class*
9:00 a.m.-11:00 a.m.	Kids Club*
9:00 a.m. - 12:00 p.m.	Ropes Course*
9:30 a.m.	Novice Group Trail Ride*
10:00 a.m.	Lead Around Horseback Ride
10:00 a.m.- 11:00 a.m.	Axe Throwing*
10:30 a.m.	Build a Bird Feeder
10:30 a.m.	Scavenger Hunt
10:30a.m. & 11:00 a.m.	Corral Lesson*
12:30 p.m.	Horsemanship 101*
1:00 p.m.	Novice Group Trail Ride*
1:00 p.m.	Lead Around Horseback Ride
1:00 p.m. - 3:00 p.m.	Kid's Club*
1:00 p.m.- 3:00 p.m.	Archery & Air Rifle Combo Class*
1:00 p.m. - 4:00 p.m.	Ropes Course*
1:30 p.m.	Intermediate Group Trail Ride*
1:30 p.m.	Egg Gathering
2:00 p.m.	Advanced Group Trail Ride*
2:00 p.m.	Pens & Hens
2:00 p.m. - 3:00p.m.	Axe Throwing*
2:30 p.m.	Starter Ride*
3:30 p.m.- 5:00 p.m.	Kid's Club*
8:00 p.m.	Family Bingo

SATURDAY

7:15 a.m.	Novice Trail Ride to Adobe*
7:30 a.m.	Intermediate Trail Ride to Adobe*
7:45 a.m.	Advanced Trail Ride to Adobe*
8:00 a.m. - 10:00 a.m.	Guided Electric Mountain Bike Ride*
8:30 a.m. - 8:00 p.m.	Arts & Crafts
8:45 a.m.	Hay Wagon to the Adobe*
8:45 a.m.	Private Trail Rides*
9:00 a.m.-11:00 a.m.	Archery & Air Rifle Combo Class*
9:30 a.m. - 10:30 a.m.	Mind Body Pilates*
10:00 a.m.	Lead Around Horseback Ride
10:00 a.m. - 11:00a.m.	Axe Throwing*
10:30 a.m.	Scavenger Hunt
10:30 a.m.	Paint Your Lucky Horseshoe
11:30 a.m. - 1:00 p.m.	Tie Dye* (ends October 28th)
1:00 p.m.	Lead Around Horseback Ride
1:00 p.m.	Novice Group Trail Ride*
1:00 p.m.- 3:00 p.m.	Archery & Air Rifle Combo Class*
1:30 p.m.	Egg Gathering
1:30 p.m.	Intermediate Group Trail Ride*
2:00 p.m.	Fridge Farm
2:00 p.m.	Advanced Group Trail Ride*
2:00 p.m. - 3:00 p.m.	Axe Throwing*
2:30 p.m.	Starter Ride*
3:30 p.m. - 4:30 p.m.	Adult Beginners' Pickleball*
4:00 p.m. - 6:00 p.m.	Guided Electric Mountain Bike Ride*
8:00 p.m.	Family Karaoke/Musical Chairs

Note: All activities are subject to change. Please check the Ranch Daily for updates.

**indicates sign-up and or fee is required in advance. Please contact Ranch Concierge at ext.7700*

DAILY SCHEDULES

SUNDAY

8:00 a.m. - 10:00 a.m.	Guided Electric Mountain Bike Ride*
8:15 a.m.	Distance Ride*
8:30 a.m. - 7:00 p.m.	Arts & Crafts
8:30 a.m.	Advanced Group Trail Ride*
8:45 a.m.	Private Trail Rides*
9:00 a.m.	Intermediate Group Trail Ride*
9:00 a.m. - 11:00 a.m.	Archery & Air Rifle Combo Class*
9:30 a.m.	Novice Group Trail Ride*
10:00 a.m.	Lead Around Horseback Ride
10:00 a.m. - 11:00 a.m.	Axe Throwing*
10:30 a.m.	Scavenger Hunt
10:30 a.m.	Paint Your Pet Rock
10:30 a.m. & 11:00 a.m.	Corral Lesson*
1:00 p.m.	Lead Around Horseback Ride
1:00 p.m.	Novice Group Trail Ride*
1:00 p.m.- 3:00 p.m.	Archery & Air Rifle Combo Class*
1:00 p.m. - 4:00 p.m.	Ropes Course* (ends November 26th)
1:30 p.m.	Egg Gathering
1:30 p.m.	Intermediate Group Trail Ride*
2:00 p.m.	Advanced Group Trail Ride*
2:00 p.m.	Frame Your Farm
2:00 p.m. - 3:00 p.m.	Axe Throwing*
2:30 p.m.	Starter Ride*
4:00 p.m.- 6:00 p.m.	Guided Electric Mountain Bike Ride*



Note: All activities are subject to change. Please check the Ranch Daily for updates.

**indicates sign-up and or fee is required in advance. Please contact Ranch Concierge at ext.7700*



ACTIVITY INFORMATION & PRICING GUIDE



ACTIVITY PRICING GUIDE

HORSEBACK RIDING

Rides are limited. Please sign up in advance.

Group Rides 1.5-2hr	\$195/rider (7 years+)
Breakfast Ride	\$195/rider (7 years+)
Private Ride* - 2 hours	\$300/rider (7 years+)
Private Ride* - 1 hour	\$200/rider (7 years+)
Corral Lessons	\$80/person (4 - 6 years)
The Starter Ride	\$99/person (7 years+)
The Distance Ride	\$270/person (12+ Adv)
Horsemanship 101	\$225 ages 12+
Picnic Ride- 3 hours	\$300 ages 12+

Private picnics can be requested for any day of the week, approval will depend on wrangler availability. minimum 2 people at \$400per person.

KIDS/FAMILY ACTIVITIES

Family Bingo	\$1/card cash
Kid's Club	\$40/child (4+ years)
Kid's Night Out	\$50/child (4+ years)
Tie Dye	\$25 (\$20- bring your own shirt)
Ropes Course	\$100/person (7 years +)
Pot your own succulent	\$15/2 pots (7 years +)

GOLF

Ranch Course

18 holes	\$150/adult \$50/junior
Twilight - After 1pm	\$105/adult \$25/junior
9 holes	\$75/adult \$25/junior

Ranch Course Rental Clubs

18 holes	\$50
9 holes	\$25
Electric Carts: 18 Holes - \$20 9 Holes - \$10	
MGI Remote Walking Carts - \$15	

River Course

Visit www.rivercourse.com or Call Extension (805) 688-6042 for rates and reservations to play the River Course.

LAKE ACTIVITIES

Lake hours and shuttle times are listed on the Ranch Daily.

Archery & Air Rifle	\$100/person (8 years +)
Axe Throwing	\$40/person (10 years+)
Bass Boat	\$200/four hours
Guided Fishing Trips	\$600
Aluminum Boat	\$60/four hours

Complimentary fishing poles, bait and boats include kayak, canoe, peddle boats, paddle boats (non-motorized boats).

Reservations required 7 days in advance for guided fishing trips. Fishing trips are 2 hours. The Fly Fishing Trip is 2 person maximum and Spin Fishing Guided trip is 3 person maximum 7-9am

FITNESS CLASSES

Daily group fitness classes available \$30/person
Personal Training available for private/group sessions
Visit www.alisal.com or call 805-686-7721 for the class schedule and more information.

TENNIS

Pickleball Clinic \$25/person
Private Pickleball Lessons available upon request.

GUIDED E-BIKE EXCURSIONS

Guided Mountain E-Bike Rides:

\$195/person with a 2 rider minimum or \$345

Private Ride: \$250/person with a 2 rider minimum or \$430.

Guests must provide their weights & heights prior to being scheduled.

Adults: Min. Height 5'1", Max Weight 260lbs

Youth: Min. Height 4'1" - All youth under 16 yrs. old must be accompanied by an adult.

Special Times for Private Rides may be requested well in advance. Participants should be in fair physical condition to participate. Water bottles and helmets are provided. Sunglasses and tennis shoes are recommended. Please note: Guided E-Bike times are subject to change due to the end of daylight savings.

CANCELLATION POLICY*

There is no charge if your activity is cancelled at least 24 hours prior to the start time. If you are cancelling within 24 hours of your scheduled activity and/or do not show up for the activity, you will be charged the full amount. In the event of extreme weather activities could be cancelled. Activities may also be cancelled due to cattle ranch operations.

ACTIVITY INFORMATION

HORSEBACK RIDING

Rides are limited. Please sign up in advance.

Group and Private Horseback Rides:

For guests 7yrs+. Please wear closed-toe shoes and meet at the barn 15 minutes prior to the start of your ride. Reservations Required. Note: stampede strings are required for all full brimmed hats. *2 person minimum for private rides

Corral Lessons:

For riders 4-6years old. Reservations required.

Lead Around:

Riders up to 6 years old will be led around by a wrangler, parent supervision is required and no sign-up is necessary.

The Starter Ride:

A catered ride for first-time horsemen and also those with minimal time available. Approx. 1 hour Ride

The Distance Ride:

A ride for the avid horseman to go farther and faster. Gallop the trails and see the farthest views we have to offer.

Approx. 3 hour Ride.

Horsemanship 101:

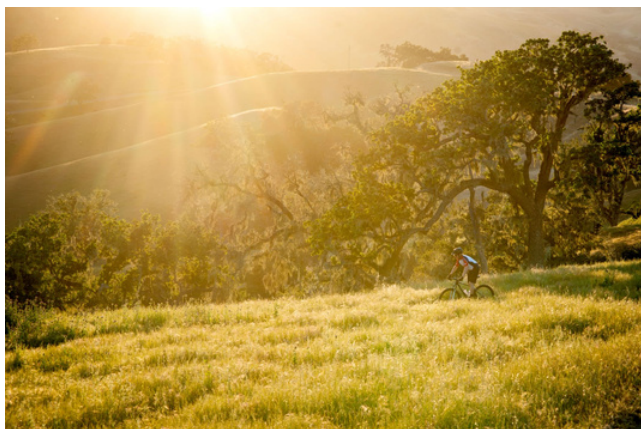
For any level of Horseman, enjoy a group lesson where our senior wranglers help you to advance your individual riding skills in an arena setting.

Picnic Ride:

Horseback to lunch where you will enjoy your pre-ordered meal.

Barnyard:

Children 12 & under must be accompanied by an adult. Closed-toe shoes are required. Open daily, 9:30 a.m.-12:30/1:30-4.p.m.



KIDS/FAMILY ACTIVITIES

Ropes Course:

This is a program for all ages who want to experience the thrill of being 10 feet to 40 feet off the ground challenging yourself in an aerial obstacle course. This program is for ages 7 and above. Ages 7 to 12 must have an adult present. Reservations are required.

Family Bingo:

Cottonwood Room, bingo cards \$1 ea. no reservation required.

Kid's Club:

Ages 4+, reservation required, meets at Laurel Room.

Kid's Night Out:

Ages 4+, dinner provided, reservation required, meets at Laurel Room.

Tie Dye:

No reservation required, meets at Laurel Room.

Pot your own Succulents:

Pot and decorate your own succulents. Choose from a variety of different succulents and paint colors. We supply everything.

Pens and Hens:

Come decorate your hen in the barnyard craft room.

Paint your pet rock:

Create your own pet rock in the barnyard craft room.

Frame your Farm:

Use a variety of farm animal stamps to create your own farm

Paint your Lucky Horseshoe:

Paint an Alisal horse's shoe in the barnyard!

Fridge Farm:

Decorate a fridge magnet to take home in the barnyard.

Build a Bird Feeder:

Attract some birds after building your bird feeder in the barnyard

CANCELLATION POLICY*

There is no charge if your activity is cancelled at least 24 hours prior to the start time. If you are cancelling within 24 hours of your scheduled activity and/or do not show up for the activity, you will be charged the full amount. In the event of extreme weather activities could be cancelled. Activities may also be cancelled due to cattle ranch activities.

ACTIVITY INFORMATION CONT.

DINING

Breakfast:

Served 7:00a.m.- 11:00 a.m. in the Ranch & Sycamore Room. Casual dress attire. Adobe Breakfasts are Wednesday and Saturday. The Hay wagon departs from the Front Desk at 8:45 a.m. Please sign up in advance for the Hay wagon Breakfast

Lunch:

Chuckwagon Grill is open for lunch 11:00 a.m. - 4:00p.m. Waggin Tongue Bar is open 11:00 a.m. - 6:00p.m.

Dinner:

Served in the Ranch & Sycamore Rooms daily 5:30p.m.- 7:30p.m. Please check your itinerary and check in with the host at your reserved dining time.

Oak Bar:

Open daily 4:00p.m The Oak Room Bar has complimentary snacks available nightly, in addition to a bar menu available Sunday through Thursday from 5:00 p.m. until 8:00 p.m.

Dress Code:

For dinners in the Dining room, we continue the Alisal tradition of dressing up for dinner. This is country formal - gentlemen over 16yrs are required to wear a sport coat. Blue or black jeans are fine. Creekside dining is ranch casual.

LAKE ACTIVITIES

Lake hours and shuttle times are listed on the Ranch Daily.

Archery and Air Rifle Combo Class:

Requires advance reservation for guests 8yr+, closed-toe shoes are required.

Axe Throwing:

Requires advance reservation for guests 10yr+, closed-toe shoes are required.

Boating and Fishing:

No advance reservations are needed for boats (motorized or non-motorized).

The Lake shuttle:

Picks up hourly at the Lake Shuttle Stop behind the pool. You cannot walk or bike to the lake.

CANCELLATION POLICY*

There is no charge if your activity is cancelled at least 24 hours prior to the start time. If you are cancelling within 24 hours of your scheduled activity and/or do not show up for the activity, you will be charged the full amount. In the event of extreme weather activities could be cancelled. Activities may also be cancelled due to cattle ranch activities.

